



ROYAL TUNBRIDGE WELLS IN BLOOM

Tunbridge Wells Crematorium and Cemetery Bloom Portfolio 2017



Contents

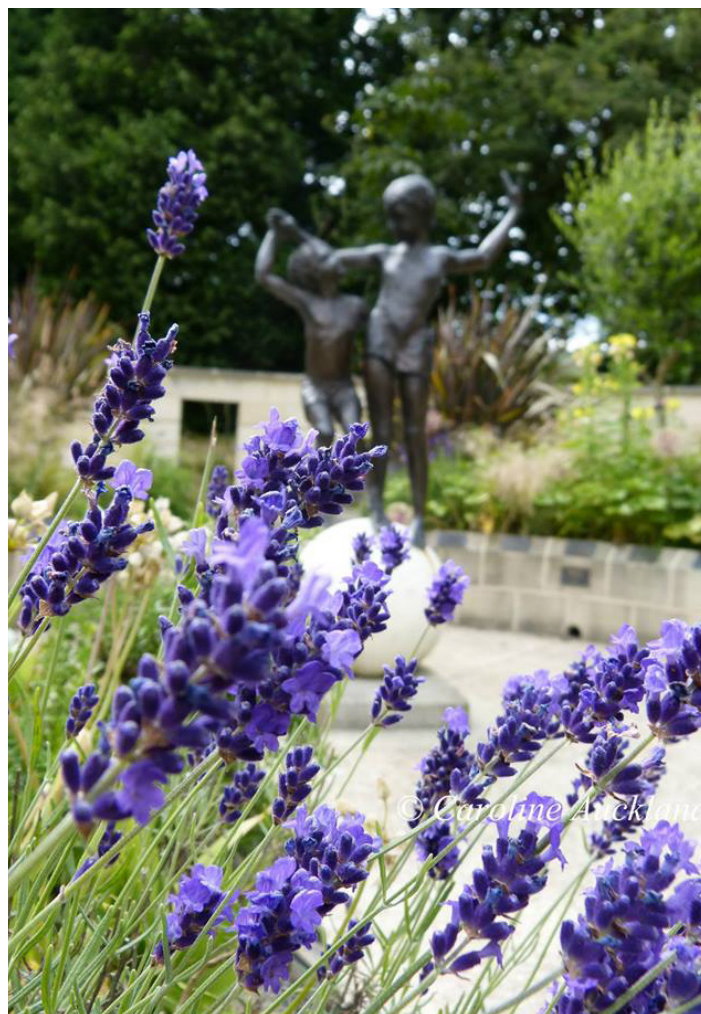
Introduction and welcome	Page 3
About the Cemetery	Page 4
Our achievements	Page 5
Environmental responsibility	Page 7
Community Participation	Page 8
Pride of place	Page 9
Our partners and sponsors	Page 10

1. Introduction and Welcome

Tunbridge Wells Cemetery and Crematorium is entering South and South East in Bloom for the second time this year in the Large Cemetery category. Royal Tunbridge Wells in Bloom team and contractors are working hard all year round to make sure the Cemetery demonstrates consistent maintenance standards. We work closely with our Friends group and volunteers to make sure we can implement ideas and improvements that will enhance the grounds whilst meeting the needs of the community.



Azaleas at the Cemetery – photo by Caroline Auckland



SANDS memorial garden – photo by Caroline Auckland



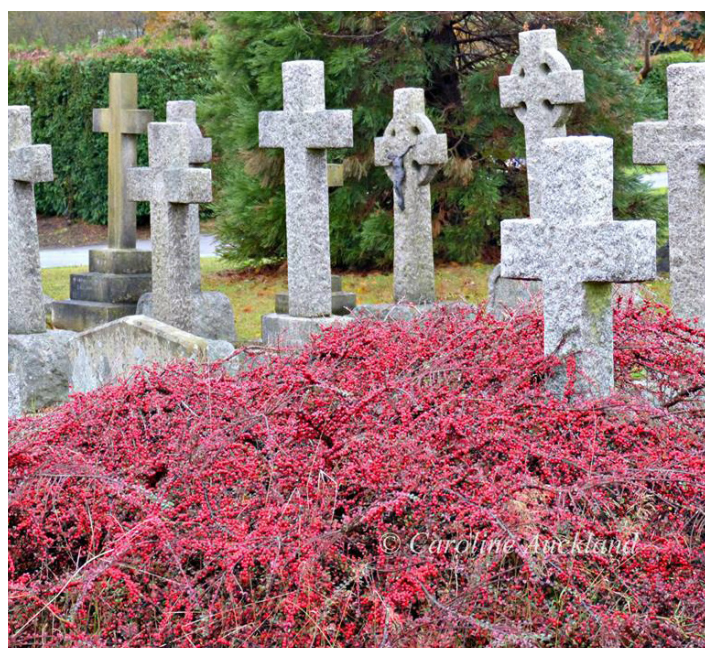
Crematorium drive in the spring

2. About the Cemetery

Tunbridge Wells Cemetery opened in 1873 and was firstly named Frant Forest Cemetery. It was laid out over an initial 23 acres site by the town surveyor William Brentnall, who had originally been recruited to rebuild the drainage system around the town. Brentnall was later buried in the same grounds. The co-located crematorium was opened in 1959.

Enlarged twice and now covering over 28 acres, today the grounds house over 44,000 burials. The cemetery contains the war graves of 72 Commonwealth service personnel of World War I and 63 of World War II.

Designed by William Brentnall, it was described as “one of the most beautiful cemeteries in England”. Its landscaping and historic memorials have over the years, like the earlier and much smaller Woodbury Park Cemetery, become a major Tunbridge Wells’ heritage site and peaceful green haven for wildlife.



*Cemetery in November
Photo by Caroline Auckland*



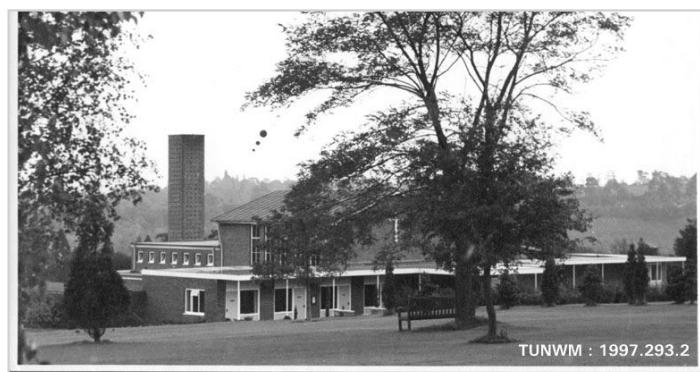
*Cemetery drive in December
Photo by Caroline Auckland*



TW Cemetery circa 1910



Crematorium pond circa 1960



Crematorium circa 1960



WWII Memorial circa 1960

3. Horticultural Achievement

■ Winter tree planning

In the winter we planted four new trees across the cemetery. They are all native species, all selected with help of the Friends of TW Cemetery and supplied by Barcham:

Sorbus aucuparia Edulis

Sorbus torminalis

Acer campestre

Prunus avium

■ Bedding displays

It is important to us to keep the Cemetery gardens full of flowers at all seasons - we have all year round displays of bedding plants. This year our winter and summer bedding was supplied by Baginton's Nurseries and planted by Sodexo Horticultural Services.

Selection of winter bedding plants:

Polyanthus Rose Shades

Polyanthus White

Polyanthus Yellow

Polyanthus Fire Dragon

Polyanthus F1 Crescendo

Polyanthus F1 Stella

Polyanthus Bright Red

Ivy Gold

Tulip Westpoint

Tulip Merlot

Tulip Maytime

Tulip Ballerina

Tulip White Dream

Tulip Spring Green

Tulip Purple Prince

■ Memorial Wall planting

Over the winter, a new Memorial Wall has been built in the Crematorium gardens. RTW in Bloom team was asked to design a garden to compliment the wall. We decided to plant Italian Cypress trees on the approach to the Crematorium walk. Garden running alongside the wall consists of mixture of shrubs, climbers and herbaceous plants. Plants for this project were supplied by Boningale Nurseries. This autumn we plan to add bulbs for the spring colour.

Selection of plants for the Memorial Wall garden:

Trees:

12 x Italian Cypress Cupressus sempervirens

Shrubs:

Chimonanthus praecox

Edgeworthia chrysantha Red Dragon

Pittosporum tenuifolium Silver Queen

Loropetalum Daruma

Exchorda x macrantha The Bride

Magnolia Butterflies

Hebe parviflora angustifolia

Daphne odora Aureomarginata

Herbaceous:

Geranium phaeum

Geranium wargrave pink

Veronica gentianoides

Brunnera Jack Frost

Veronocstarum virginicum Fascination

Eryngium giganteum Silver Ghost

Aster Little Carlow

Helenium Rubinzweg

Helenium pumilum Magnificum

Iris germanica Latest Style

Helleborus orientalis

Climbers:

Clematis Gravetye Beauty

Clematis napaulensis

Clematis Fragrant Oberon

Climbing Roses

Rosa New Dawn Red

Rosa Claire Austin

■ Upper Rose Garden

Last season we lost some of the Lavenders on the edges of the rose beds. Dead lavenders have been removed and replaced with Hebe Emerald Gem. This project took us quite a long time to complete, as over 1500 Hebes had to be planted!

■ Lower Rose Garden

Lower Rose Garden, located near the Crematorium chapel, was completely restored in March 2016. Old standard roses passed their best times and needed to be replaced. Selection of plants includes scented roses, perennials (Iris, Geranium, Primula, Astrantia, Schizostylis) and bulbs

(*Lilium regale*) to provide a flow of colour throughout the year. To emphasize formal character of the garden we decided to add shaped topiary box and box and heather edging. Restoration works were completed by our grounds maintenance contractor Sodexo and the Bloom team.

This year we improved the garden further by adding more exciting perennial colour to the rose beds. A *Liliodendron tulipifera Aureomarginata* tree was planted in the middle of the lawn, and a new paving and bench have been installed allowing people to rest and admire the rose gardens.

■ 'Bayham bed'

A shrub bed located between Bayham playing field and Lower Rose Garden was looking rather unloved and overgrown. Together with the Friends of TW Cemetery we decided to renovate the bed and to create a woodland border, with shade loving flowering shrubs, perennials and ferns. Our contractor Treework helped us with removal of large shrubs and roots. Friends of TW Cemetery and volunteers from AXA helped us with ground preparation. Planting was completed by the Bloom team and the Friends.

Plant choice for 'Bayham bed':

Perennials:

Viola riviniana

Omphalodes cappadocica

Primula florindae

Convallaria majalis

Geranium phaeum

Helleborus orientalis mix

Dicentra Valentine

Aquilegia Blue Barlow

Actaea simplex Brunette

Ferns:

Athyrium vidalii

Dryopteris erythrosora

Shrubs:

Kalmia angustifolia f. rubra

Sarcococca confusa

Callicarpa bodinieri var. giraldii

Enkianthus campanulatus

Philadelphus Lemoinei



DS Restoration paving at the Lower Rose Garden



Memorial Wall before the garden was created.

4. Environmental Responsibility

■ Sustainable management

Non-chemical methods of pest and weed control will be used whenever possible. Plant varieties will be selected for their disease resistance to minimise use of chemical sprays.

Planting mediums will not contain peat. Products used will have the minimum practical packaging.

Local products will be used and materials will come from sustainable sources. Wood products will be manufactured from certified wood, subject to availability.

Recycled materials will be used, where appropriate including re-use of bulbs, bedding plants and green waste.

Our grounds maintenance contractors compost organic material wherever possible in the composting bays installed to for the park's use. Shrub beds are mulched with spent mushroom compost.

Where appropriate planting schemes will consist of varieties selected for drought tolerance. Ground cover planting and mulches will be used to reduce the need for irrigation.

Shrub beds are mulched with spent mushroom compost to help retain moisture and add organic matter.

All irrigation is carried out early in the morning.

■ Nature Conservation

The Cemetery grounds have been designated Local Wildlife Site for their fungi population and appearance of the Green-winged Orchid. Together with Kent High Weald Partnership and Sodexo we have taken action to protect and enhance areas where significant numbers of waxcaps and the orchids have been found. We ceased mowing areas with Green-winged Orchids in the months of May and June, and we remove grass arising safer each mow from fungi-rich areas to keep low nutrition levels.



New composting bay



Green-winged Orchids at the Cemetery



Martin Allison, mycologist. Fungi walk photo by Caroline Auckland

5. Community Participation

Royal Tunbridge Wells in Bloom actively promote volunteer opportunities providing green skills and an understanding of local environment and heritage.

■ Friends of Tunbridge Wells Cemetery at Hawkenbury

Our volunteers at the Cemetery mainly include the Friends group. The Friends of Tunbridge Wells Cemetery have been formed in 2014 to work with the Council to protect, conserve and enhance the whole cemetery. Since then the group has been transcribing, researching and photographing the oldest memorials, publishing booklets on history of the Cemetery and people buried here. The Friends also organise themed walks, talks, exhibitions and restoration of historic graves.

Within the Friends there is a committed gardening group. They help us with clearance of vegetation in historic parts of cemetery, tree planting and maintenance of memorial gardens – like children’s corner bed and Primrose memorial garden which judges will see at the tour. Over the past 12 months the gardening team contributed 53 volunteering hours at the value of £378.



AXA volunteers prepping the ground for planting



AXA volunteers clearing bramble bushes

■ AXA business volunteering

We have received a great support from AXA this year that sent us a group of volunteers for a day to help with bramble removal and ground preparation. 15 volunteers contributed a day of work each at the total value of £750.



*Nature walk in autumn
Photo by Caroline Auckland*



Dr Ian Beavis inspecting insects



Fungi walk 2016 with KHWP



New rose garden sign

- **New signage**

Over the winter new signs have been installed across the Cemetery and Crematorium grounds. Tastefully designed signs direct now visitors to the Chapels, Gardens and Cemetery sections. Matching maps and leaflets have been printed and a new website created.

- **Memorial Wall**

The new bespoke designed Memorial Wall is located near the Crematorium office, next to our lawn for the witnessed scattering of cremated remains. With newly landscaped path, seating and a new garden, the Wall provides a peaceful place for reflexion.

- **Cloister Garden**

Cloister Garden at the Crematorium has been refurbished over the winter. The Panorama, consisting of 32 individual

niches in polished granite, forms the central feature of the new Cloister Garden. New matching paving and benches have been installed there for the visitors.



Opening of the new Memorial Wall, May 2017



Opening of Cloister Garden, May 2017



ROYAL TUNBRIDGE WELLS IN BLOOM



ONE WARWICK PARK
HOTEL

southeastern

